

Figure 3-19. When amplifier is grounded, the best shield connection is C, with shield connected to amplifier common.

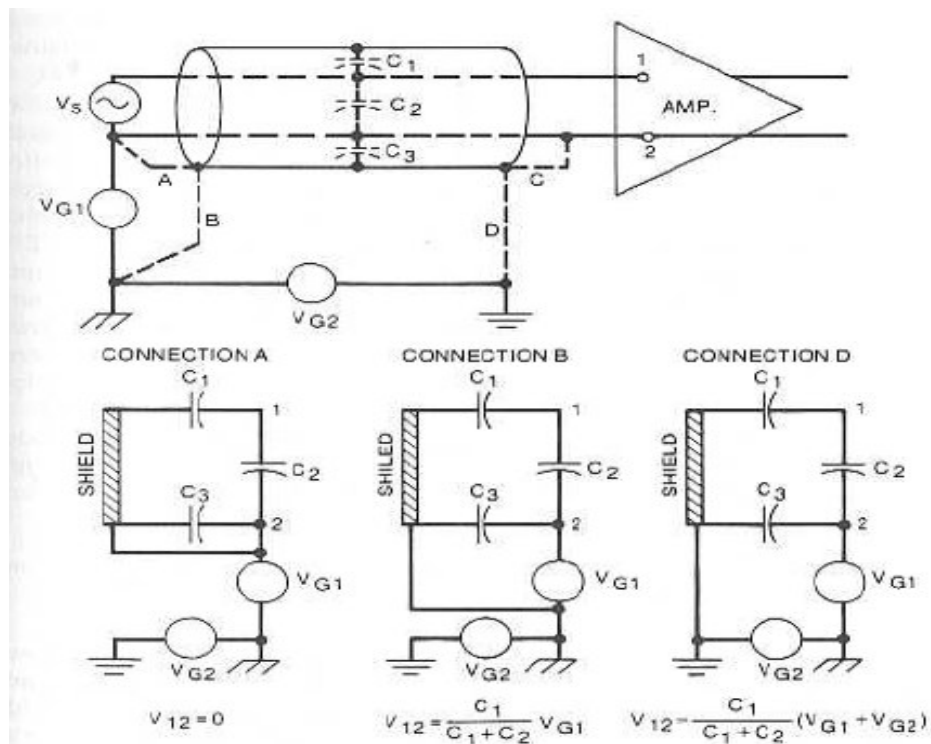
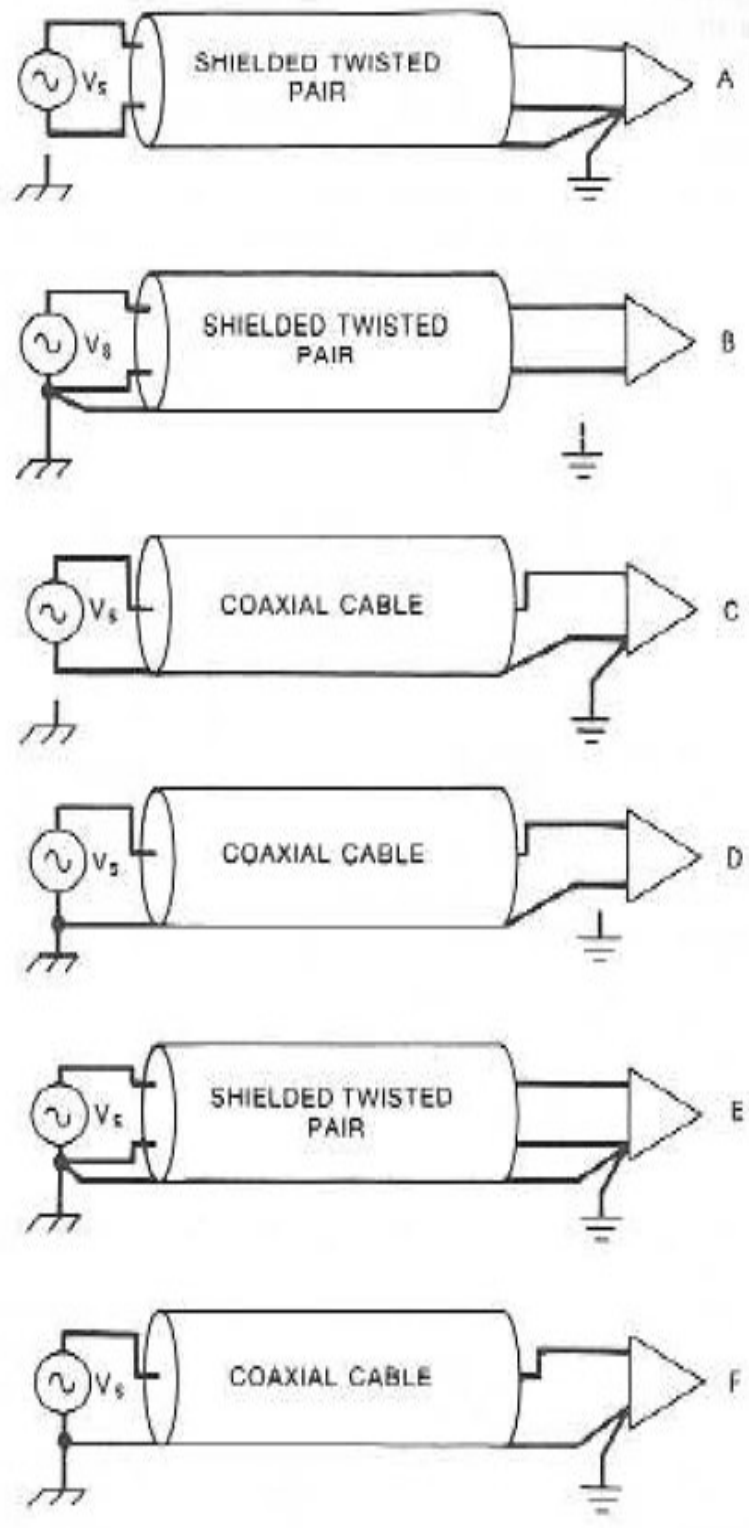
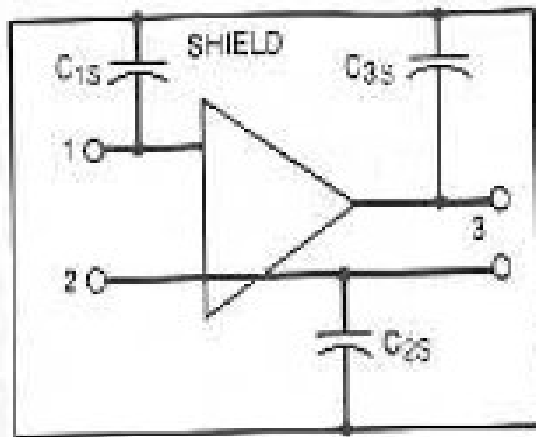


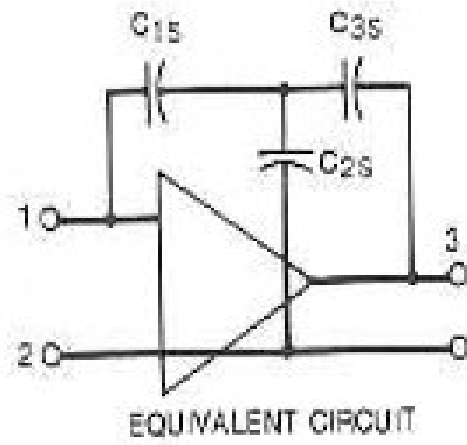
Figure 3-20. When source is grounded, the best shield connection is A, with shield connected to the source common. The configuration can also be used with a differential amplifier.



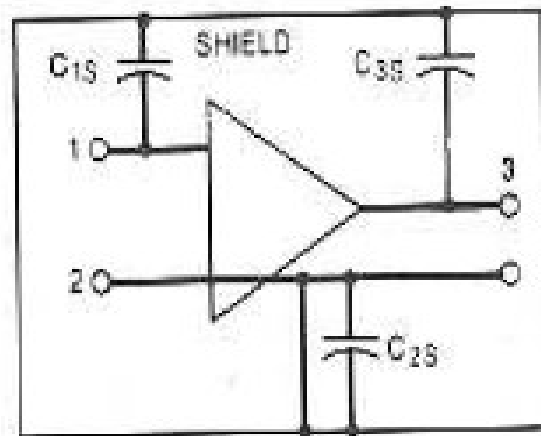
**Figure 3-21.** Preferred grounded schemes for shielded, twisted pairs and coaxial cable at low frequency.



PHYSICAL RELATIONSHIP



EQUIVALENT CIRCUIT



SHIELD CONNECTED TO COMMON

Figure 3-18. Amplifier shield should be connected to the amplifier common.